

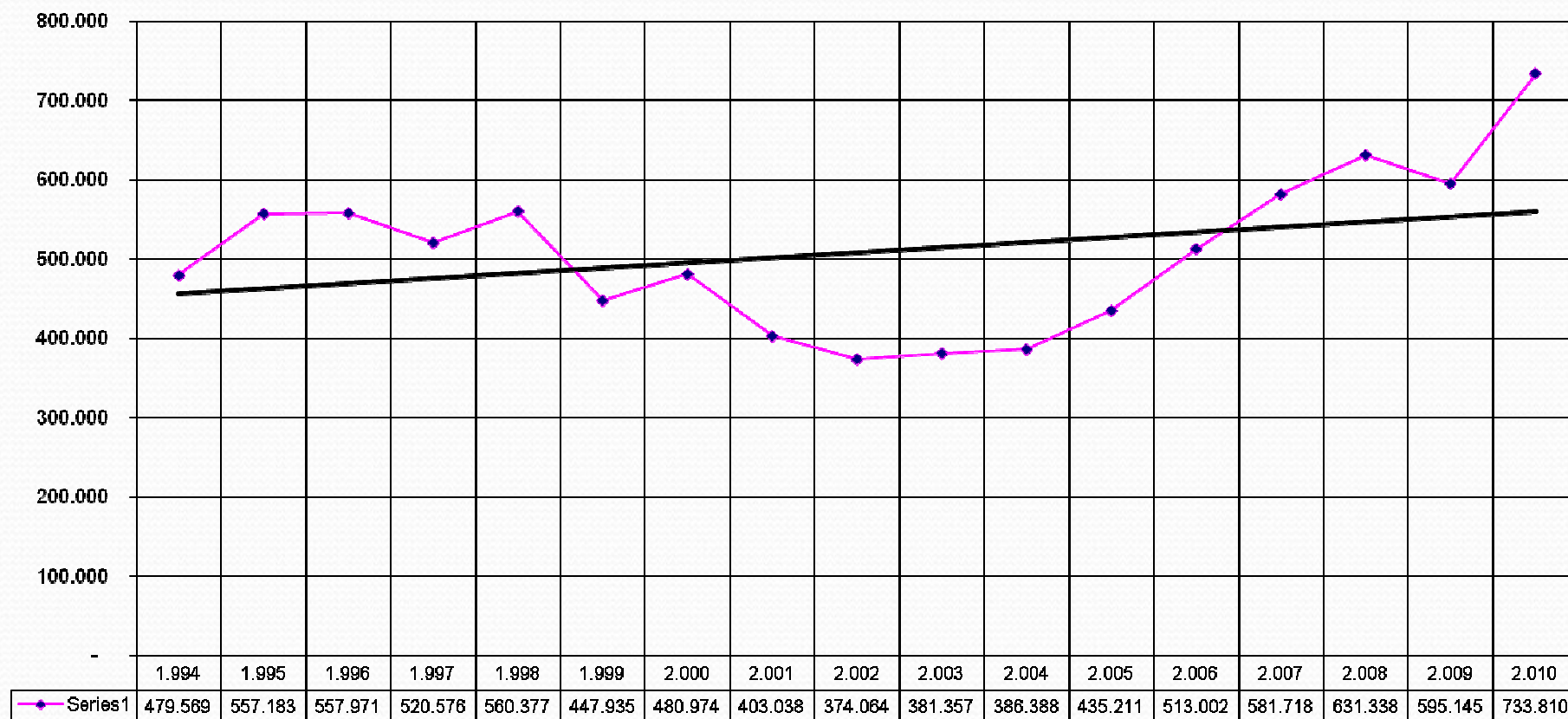
Tabla de los Movimientos Históricos de Pasajeros del Aeropuerto Internacional "Silvio Pettirossi" período (1994 a 2010)

PASAJEROS	ENE	FEB	MAR	ABR	MAY	JUN	JUL	AGO	SEP	OCT	NOV	DIC	TOTAL	PROMEDIO MENSUAL	PROMEDIO DIARIO
	Movimiento Total del Trafico de Pasajeros del Aeropuerto Int'l Silvio Pettirossi (Nacional + Internacional)														
1.994	66.195	47.715	38.685	32.230	29.662	30.733	39.548	38.812	37.251	38.772	39.944	40.022	479.569	39.964	1.314
1.995	46.310	42.848	41.469	44.344	41.367	43.241	54.771	45.930	50.623	46.701	48.648	50.931	557.183	46.432	1.527
1.996	53.132	47.854	44.557	43.655	40.247	39.945	55.071	46.040	48.867	49.206	44.307	45.090	557.971	46.498	1.529
1.997	52.284	42.945	44.319	42.094	38.267	38.540	51.607	41.943	42.765	40.973	40.593	44.246	520.576	43.381	1.426
1.998	56.393	47.340	43.734	43.736	42.557	39.121	54.727	53.937	43.239	43.576	44.073	47.944	560.377	46.698	1.535
1.999	46.045	35.976	33.797	32.315	32.042	35.084	51.627	37.424	36.213	36.186	34.420	36.806	447.935	37.328	1.227
2.000	41.674	39.368	37.919	38.854	33.835	32.965	43.932	37.690	39.924	56.756	37.256	40.801	480.974	40.081	1.318
2.001	38.773	33.234	33.795	32.932	31.350	32.031	40.887	34.130	32.361	30.422	28.880	34.243	403.038	33.587	1.104
2.002	37.972	32.266	32.638	28.594	30.772	29.666	37.466	24.106	29.202	29.143	28.065	34.174	374.064	31.172	1.025
2.003	37.203	32.311	30.322	29.925	29.431	31.807	37.301	34.617	29.948	27.727	28.901	31.864	381.357	31.780	1.045
2.004	32.129	28.639	30.819	30.489	28.236	30.115	37.865	33.916	33.774	33.582	32.423	34.401	386.388	32.199	1.059
2.005	35.032	29.850	36.114	30.483	31.414	32.355	42.388	37.972	38.474	37.781	39.394	43.954	435.211	36.268	1.192
2.006	45.626	40.170	44.192	43.266	41.371	40.968	47.434	42.741	40.505	38.847	41.225	46.657	513.002	42.750	1.405
2.007	47.979	43.675	45.451	44.827	46.344	44.545	55.073	49.409	45.794	49.735	51.512	57.374	581.718	48.477	1.594
2.008	58.232	51.136	57.368	48.206	51.464	56.969	69.159	51.577	46.929	45.651	45.828	48.819	631.338	52.612	1.730
2.009	51.874	41.138	48.473	47.186	43.541	44.474	55.379	47.758	48.567	51.493	53.099	62.163	595.145	49.595	1.631
2.010	68.472	55.340	57.690	53.164	54.698	53.005	71.064	67.277	60.419	61.301	62.145	69.235	733.810	61.151	2.010

Fuente: Gcia. de Operaciones Aeropuerto Internacional Silvio Pettirossi

Gráfico del Movimiento total de Pasajeros Históricos del Aeropuerto Internacional "Silvio Pettirossi" período (1996 a 2010)

Variación Anual del Tráfico de Pasajeros del Aeropuerto Internacional "SILVIO PETTIROSSI" (1994 a 2010)



Fuente: Gcia. de Operaciones Aeropuerto Internacional Silvio Pettirossi

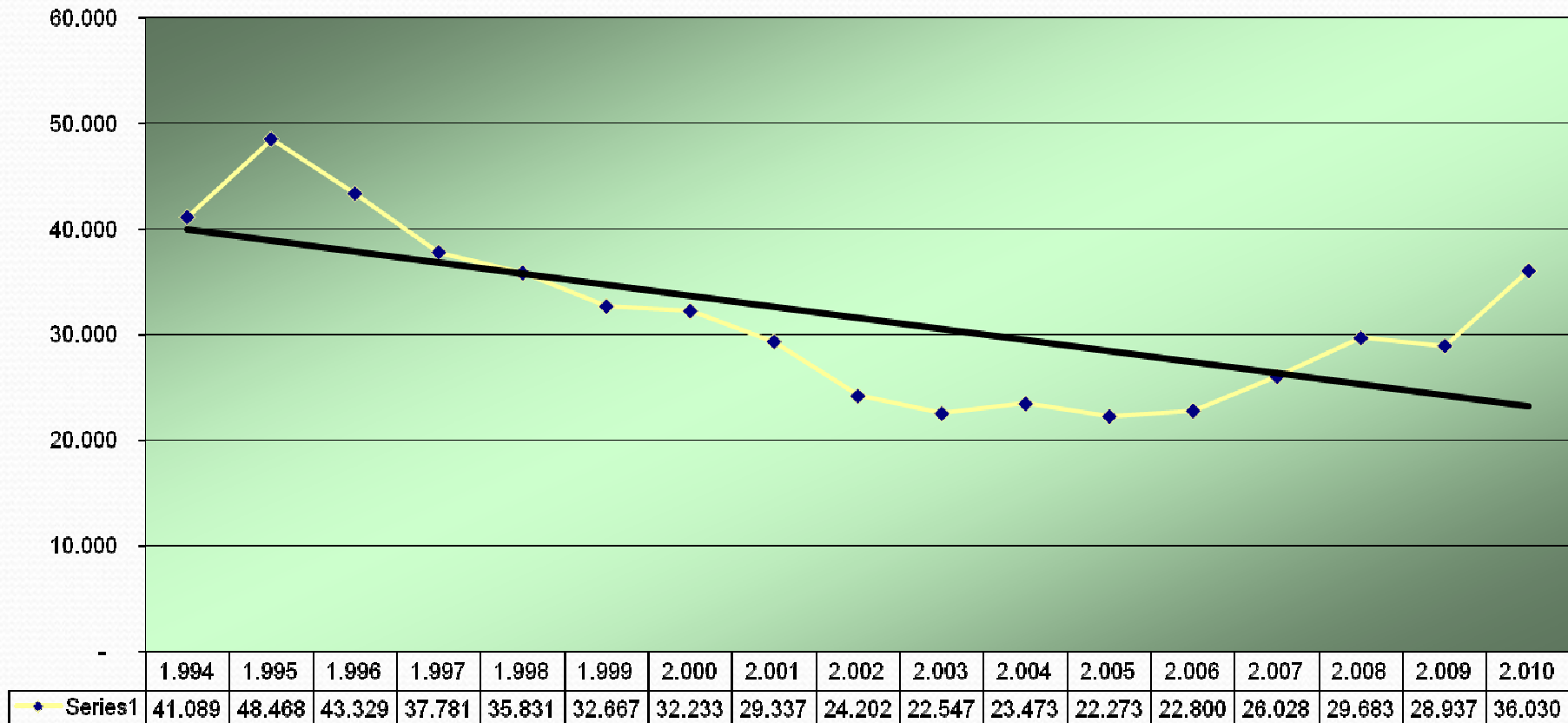
Tabla de los Movimientos Históricos de Aeronaves del Aeropuerto Internacional "Silvio Pettirossi" período (1994 a 2010)

AÑO	ENE	FEB	MAR	ABR	MAY	JUN	JUL	AGO	SEP	OCT	NOV	DIC	TOTAL	PROMEDIO MENSUAL	PROMEDIO DIARIO
	MOVIMIENTO TOTAL DEL TRAFICO DE AERONAVES AEROUERTO "SILVIO PETTIROSSI"														
1.994	2.937	2.587	3.388	2.942	3.037	3.482	3.545	3.902	3.726	3.515	4.271	3.757	41.089	3.424	114
1.995	3.326	3.571	4.140	3.904	4.377	4.218	4.211	3.805	3.754	4.592	4.460	4.110	48.468	4.039	135
1.996	3.467	3.277	3.472	3.504	3.806	3.778	4.483	3.688	3.699	3.372	3.679	3.104	43.329	3.611	120
1.997	3.001	2.507	2.987	3.526	3.227	3.298	3.164	3.228	2.995	3.424	3.001	3.423	37.781	3.148	105
1.998	1.516	2.510	3.034	3.152	3.874	3.071	3.776	2.563	3.008	3.169	3.132	3.026	35.831	2.986	100
1.999	2.348	2.710	2.736	2.715	2.827	2.678	2.922	2.695	2.692	2.678	2.849	2.817	32.667	2.722	91
2.000	2.396	2.372	2.740	2.715	2.163	2.500	3.026	3.001	2.871	2.694	2.929	2.826	32.233	2.686	90
2.001	2.405	2.198	2.531	2.325	2.616	2.511	2.360	2.614	2.970	1.033	2.464	3.310	29.337	2.445	81
2.002	2.036	1.385	2.052	2.052	2.131	1.967	2.084	1.977	1.990	2.027	2.220	2.281	24.202	2.017	67
2.003	1.745	1.611	1.817	2.119	1.963	1.790	1.823	2.273	1.945	1.988	1.627	1.846	22.547	1.879	63
2.004	1.811	1.716	1.927	1.813	1.787	1.956	2.002	2.031	2.053	2.370	1.906	2.101	23.473	1.956	65
2.005	1.628	1.602	1.843	1.651	1.960	1.787	2.183	2.074	1.990	1.691	1.878	1.986	22.273	1.856	62
2.006	1.755	1.723	1.889	1.845	1.976	1.956	1.907	1.934	1.852	1.746	2.127	2.090	22.800	1.900	63
2.007	1.739	1.840	2.076	2.057	2.220	2.197	2.175	2.285	2.210	2.294	2.498	2.437	26.028	2.169	72
2.008	2.050	2.280	2.924	2.879	2.671	2.290	2.871	2.440	2.329	2.158	2.503	2.288	29.683	2.474	82
2.009	1.952	1.914	2.290	2.592	2.243	2.459	2.292	2.491	2.506	2.729	2.555	2.914	28.937	2.411	80
2.010	2.671	2.302	3.054	2.858	2.843	2.973	2.983	3.127	3.088	3.355	3.528	3.248	36.030	3.003	100

Fuente: Gcia. de Tránsito Aéreo Aeropuerto Internacional Silvio Pettirossi

Gráfico del Movimiento total de Aeronaves Históricos del Aeropuerto Internacional "Silvio Pettirossi" período (1994 a 2010)

Variación Anual del Tráfico de Aeronaves del Aeropuerto Internacional "SILVIO PETTIROSSI" periodo (1994 a 2010)



Fuente: Gcia. de Tránsito Aéreo Aeropuerto Internacional Silvio Pettirossi

Tabla de los Movimientos Históricos de Carga del Aeropuerto Internacional "Silvio Pettirossi" período (1994 a 2010)

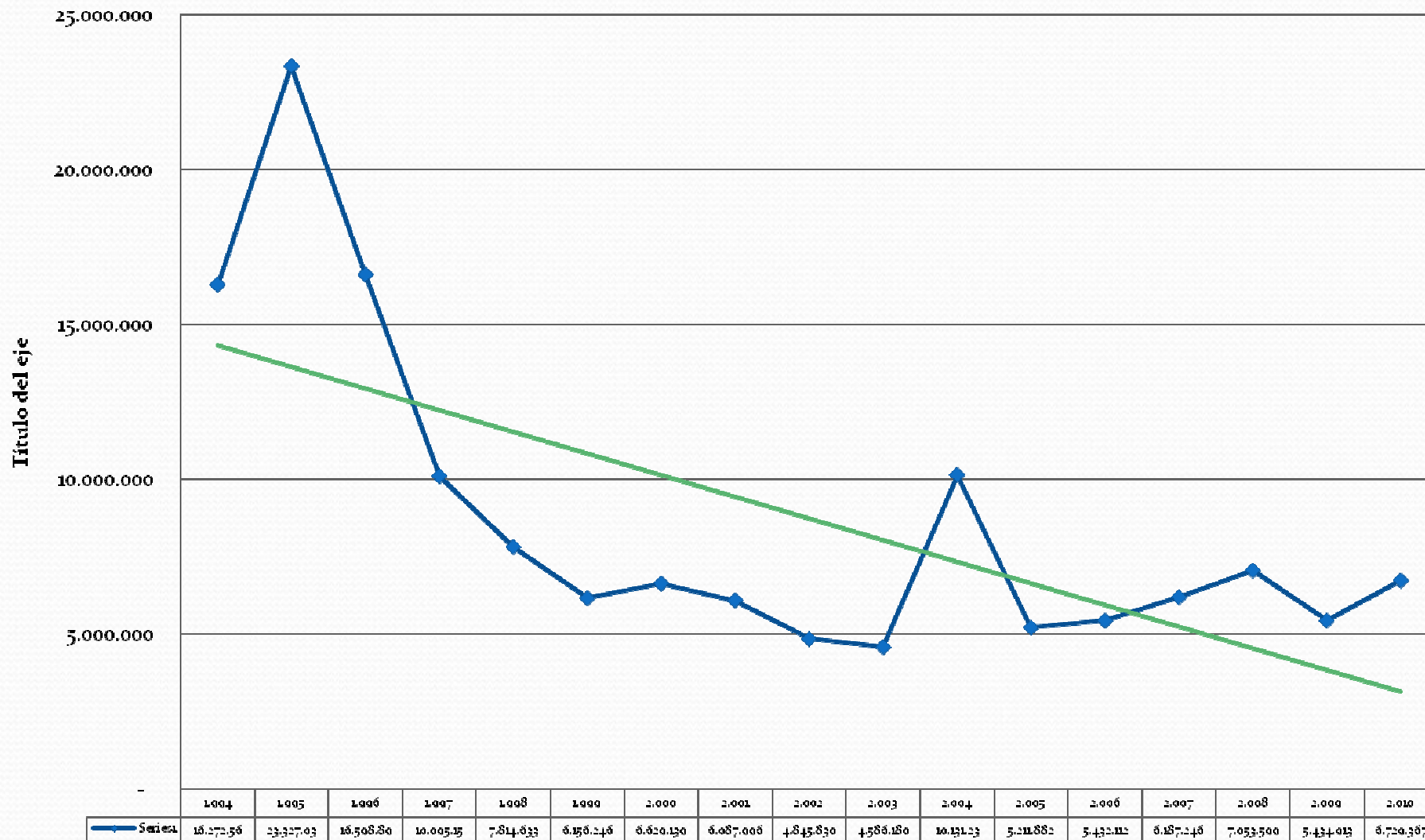
CARGA	ENE	FEB	MAR	ABR	MAY	JUN	JUL	AGO	SEP	OCT	NOV	DIC	TOTAL
	EXPORTACIONES E IMPORTACIONES VUELOS REGULARES + VUELOS CARGUEROS SILVIO PETTIROSSI												
1.994	857.175	776.567	1.056.269	976.619	1.137.288	1.067.135	1.083.902	1.404.668	1.715.076	2.121.069	2.015.299	2.061.494	16.272.561
1.995	1.635.575	1.959.368	2.401.220	2.234.955	2.293.817	1.976.183	2.069.925	1.736.622	1.853.855	1.799.105	1.759.226	1.607.188	23.327.039
1.996	1.607.980	1.436.761	1.858.020	1.293.868	1.394.226	1.188.473	1.328.426	1.194.613	1.271.092	1.255.069	1.512.495	1.257.870	16.598.893
1.997	812.653	798.908	896.515	856.689	860.635	779.522	792.310	834.708	1.019.557	779.053	880.641	783.967	10.095.158
1.998	579.074	717.034	769.606	731.090	594.788	598.939	726.299	622.974	546.378	601.793	688.717	637.941	7.814.633
1.999	502.831	582.254	484.626	507.625	502.184	484.588	487.805	552.283	488.334	447.594	573.942	542.180	6.156.246
2.000	420.392	576.435	445.074	509.957	532.676	535.036	550.667	532.272	659.417	905.112	514.587	447.515	6.629.139
2.001	561.186	420.155	598.003	525.276	702.419	589.766	420.090	476.637	331.998	489.982	416.790	555.693	6.087.996
2.002	350.931	271.077	303.071	436.146	377.361	396.403	409.291	344.559	285.798	418.144	863.972	389.078	4.845.830
2.003	341.858	282.213	363.524	327.825	386.826	476.986	386.220	385.035	438.025	427.047	407.813	362.808	4.586.180
2.004	570.161	796.578	863.106	907.818	925.636	802.654	695.442	913.448	757.532	822.807	798.944	1.277.112	10.131.237
2.005	319.454	354.174	355.967	461.071	410.796	383.053	425.888	400.845	487.608	580.097	560.600	472.329	5.211.882
2.006	295.705	379.197	468.551	561.343	476.403	466.213	447.332	392.208	541.785	424.184	477.190	502.000	5.432.112
2.007	461.472	465.227	448.048	479.729	477.858	503.697	572.580	526.519	501.402	509.707	573.538	667.469	6.187.246
2.008	374.934	688.841	762.571	652.495	647.177	615.161	639.868	526.985	590.825	624.678	537.736	392.328	7.053.599
2.009	393.712	355.318	548.393	319.921	386.932	405.775	465.330	495.874	556.498	561.159	502.795	443.206	5.434.913
2.010	446.848	412.502	496.232	456.821	587.528	554.774	507.780	597.435	652.333	624.646	738.274	654.195	6.729.367

Fuente: Gcia. de Cargas Aéreas Aeropuerto Internacional Silvio Pettirossi

Obs.: Los datos están expresados en Kilogramos

Gráfico del Movimiento Total de Carga Históricos del Aeropuerto Internacional "Silvio Pettirossi" período (1994 a 2010)

Variación Anual del Tráfico de Carga del Aeropuerto Internacional "SILVIO PETTIROSSI" período (1994 a 2010)



Fuente: Gcia. de Cargas Aéreas Aeropuerto Internacional Silvio Pettirossi

Obs.: Los datos están expresados en Kilogramos